

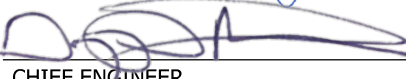


INDEX	
SHEET NO.	SUBJECT
1	PCCP Joints Index
2	Sawed Joints and Joint Sealant
3	D-1 Contraction Joint Details
4	Transverse Construction Joint Details
5	Longitudinal Joint Details

GENERAL NOTES:

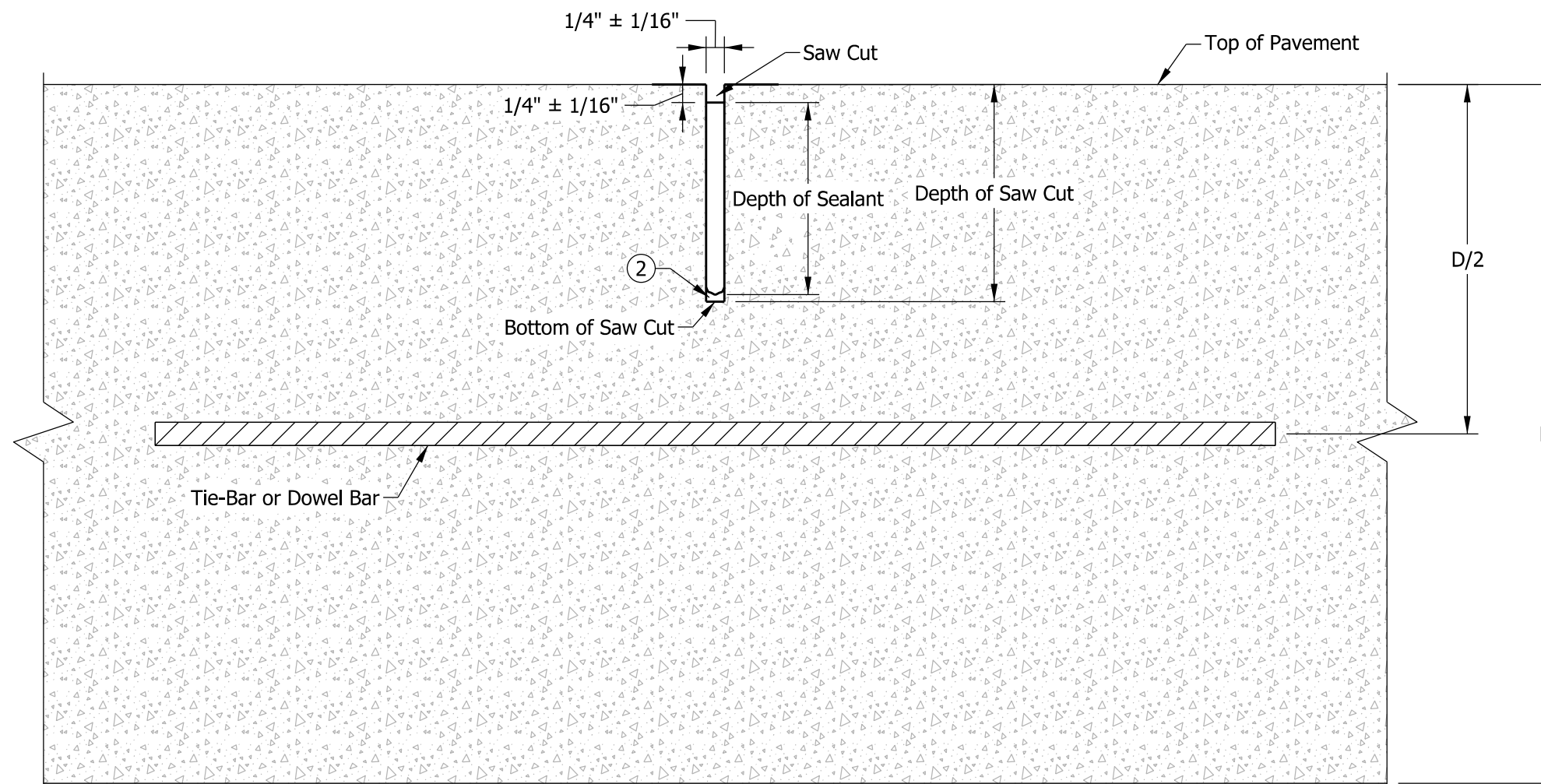
1. Dowel bars shall be epoxy coated.
2. Tie-bars shall be epoxy coated.

INDIANA DEPARTMENT OF TRANSPORTATION	
PCCP JOINTS INDEX SEPTEMBER 2020	
STANDARD DRAWING NO. E 503-CCPJ-01	
	 03/10/20 DESIGN STANDARDS ENGINEER DATE
	 05/08/20 CHIEF ENGINEER DATE

TYPE OF JOINT	DEPTH OF SAW CUT	DEPTH OF SEALANT
Longitudinal Joint	D/3	2" (min.)
D-1 Contraction Joint	D/3	2" (min.)
Retrofit Contraction Joint (3)	1"	Bottom of Saw Cut
Retrofit Pressure Relief Joint (3)	1"	Bottom of Saw Cut
Transverse Construction Joint	1"	Bottom of Saw Cut
Longitudinal Construction Joint	1"	Bottom of Saw Cut

NOTES:

1. Multiple passes of sealant may be required.
2. Backer rod shall not be installed.
3. For retrofit contraction joint and pressure relief joint details, see Standard Drawing Series E 506-CCPP.

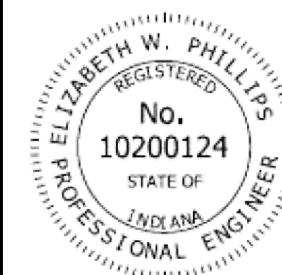


D = PCCP Thickness

INDIANA DEPARTMENT OF TRANSPORTATION

SAWED JOINTS
AND
JOINT SEALANT
SEPTEMBER 2020

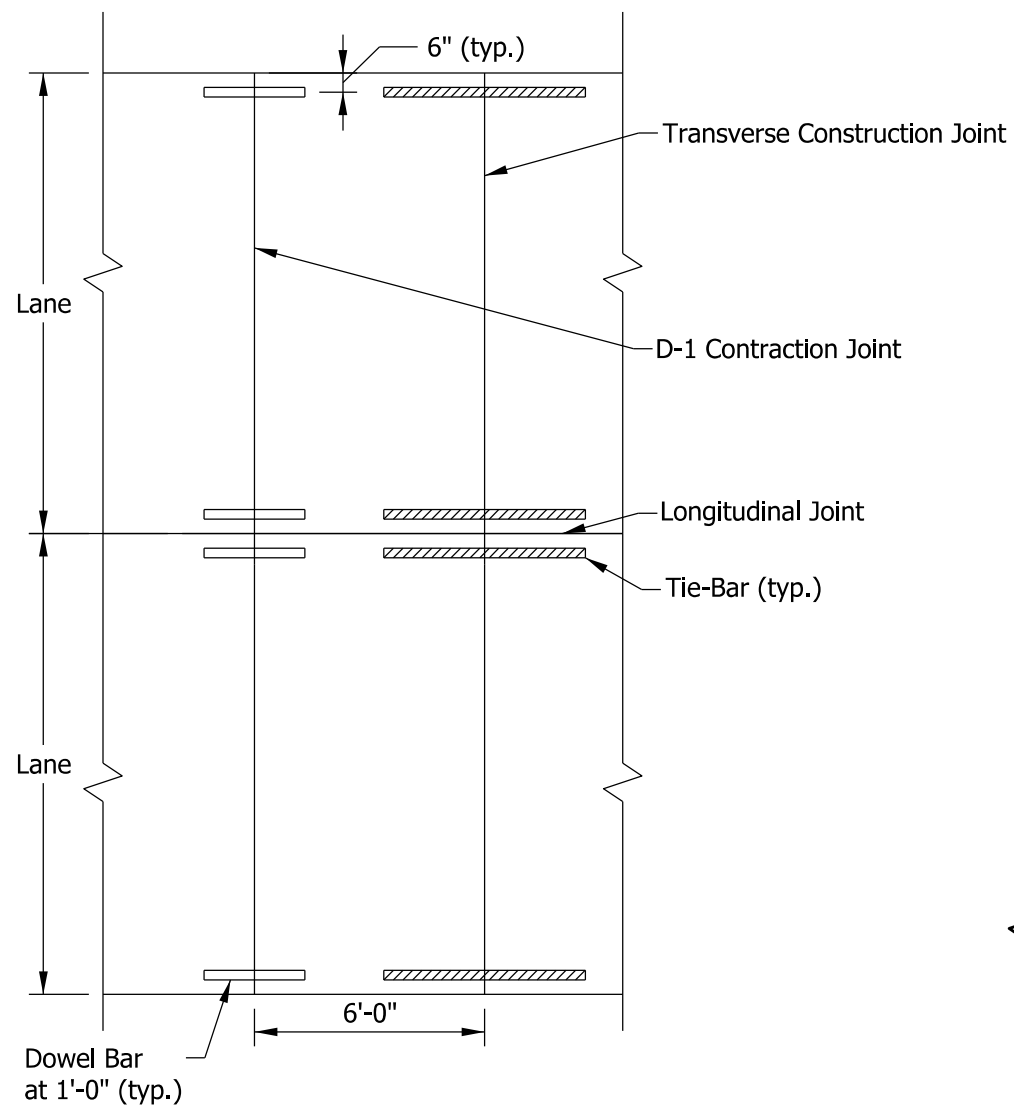
STANDARD DRAWING NO. E 503-CCPJ-02



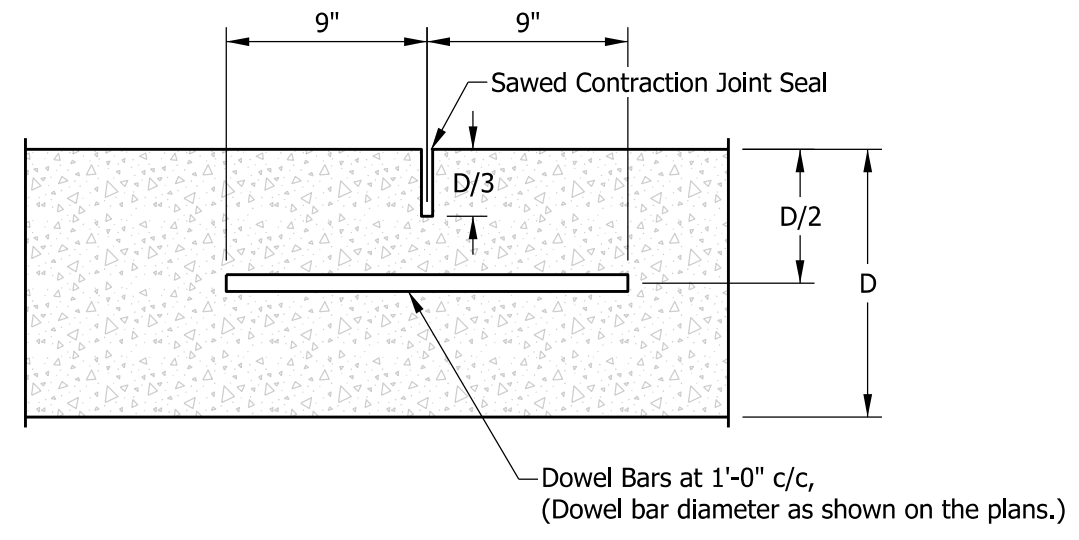
Elizabeth W. Phillips 03/10/20
DESIGN STANDARDS ENGINEER DATE

[Signature] 05/08/20
CHIEF ENGINEER DATE

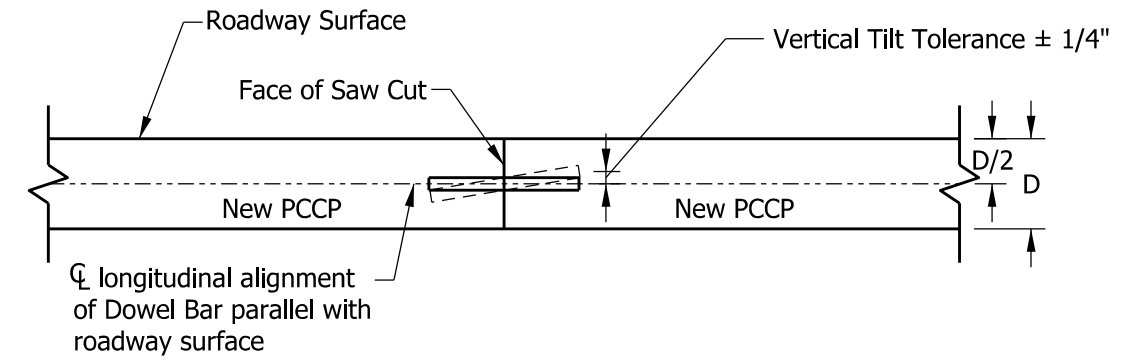
**TRANSVERSE AND LONGITUDINAL
SAW CUT WITH HOT Poured SEALANT**



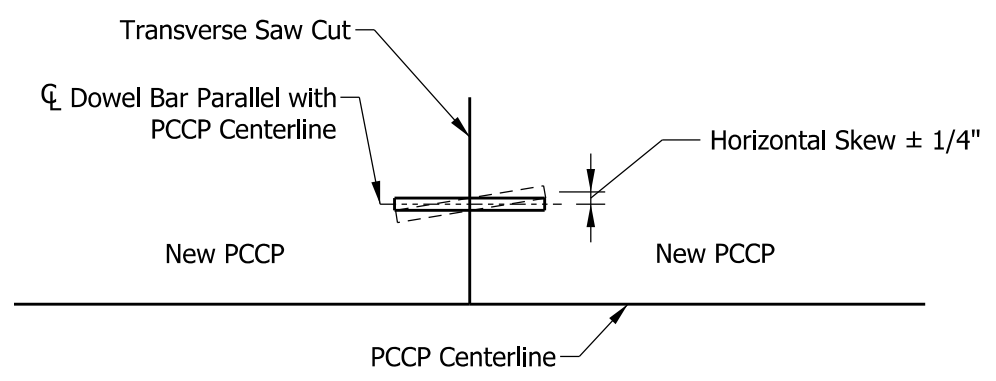
PLAN



TYPE D-1 CONTRACTION JOINT
LONGITUDINAL SECTION THROUGH PCCP

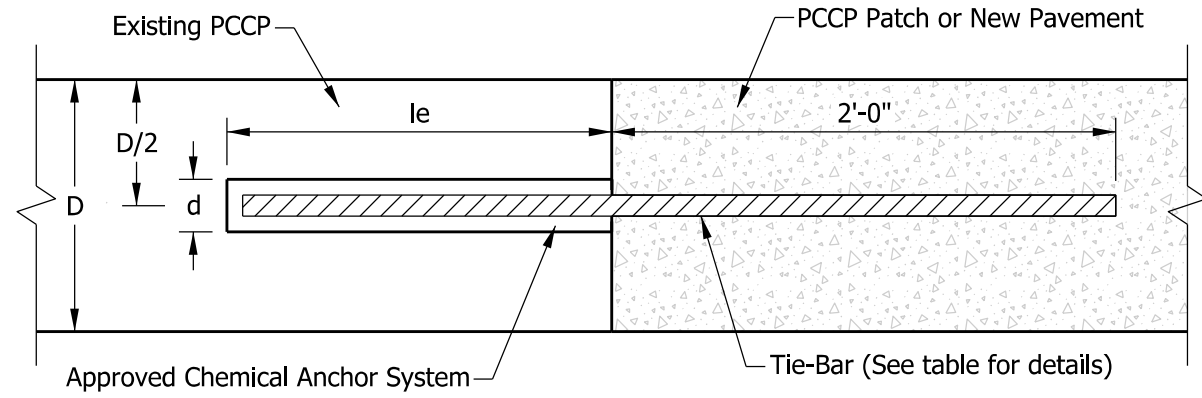


ELEVATION VERTICAL TILT



PLAN HORIZONTAL SKEW

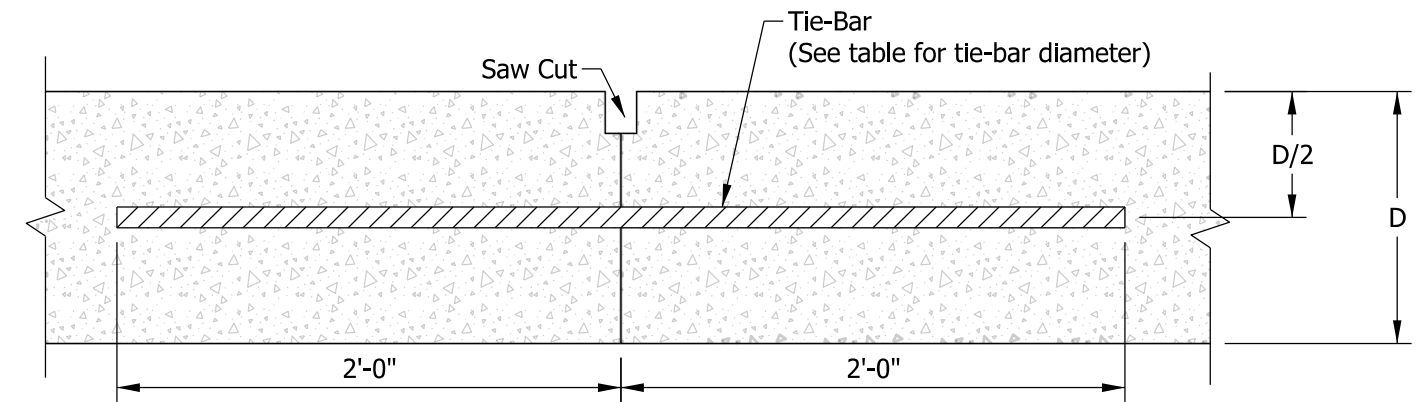
INDIANA DEPARTMENT OF TRANSPORTATION	
D-1 CONTRACTION JOINT DETAILS	
SEPTEMBER 2020	
STANDARD DRAWING NO.	E 503-CCPJ-03
	 DESIGN STANDARDS ENGINEER 03/10/20 DATE
	 CHIEF ENGINEER 05/08/20 DATE



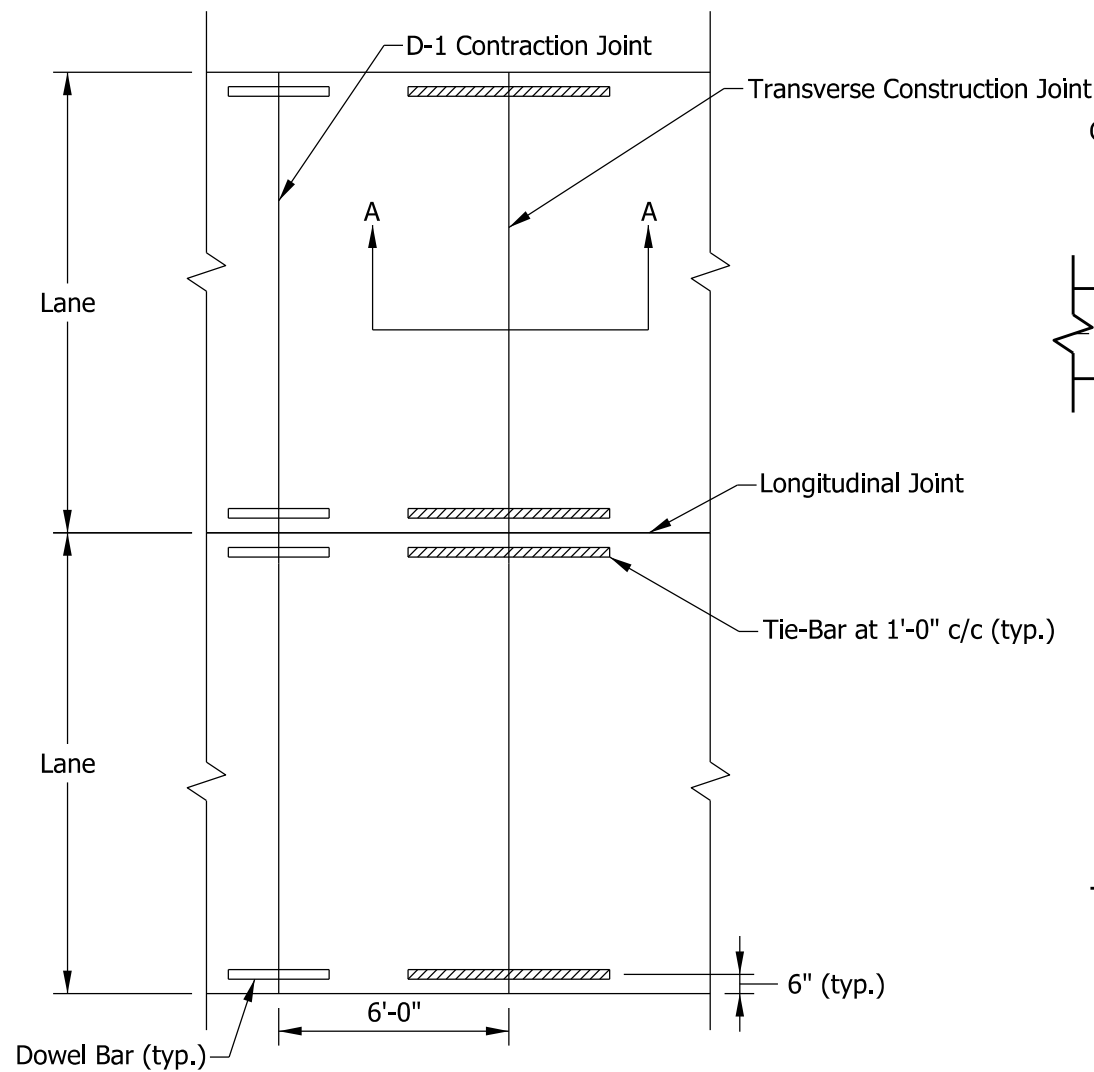
**SECTION A-A
(RETROFITTED TIE-BARS)**

NOTE:

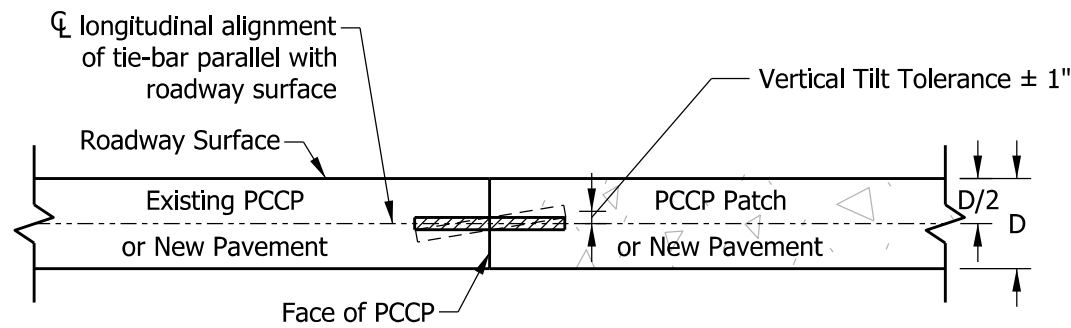
1. Diameter of drilled hole (d) shall be in accordance with the chemical anchor system manufacturer's instructions.



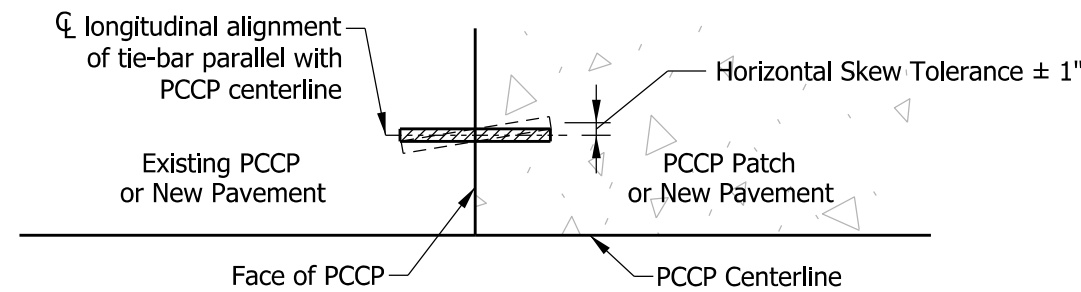
**SECTION A-A
(TIE-BARS PLACED IN PLASTIC CONCRETE)**



PLAN



**ELEVATION
VERTICAL TILT**



**PLAN
HORIZONTAL SKEW**

TIE-BAR SIZES FOR TRANSVERSE CONSTRUCTION JOINT		
Pavement Thickness, D	Tie-Bar Size	Min. le (Retrofit)
Less than 9"	#5	1'-0"
9" through 12"	#8	1'-8"
Greater than 12"	#10	2'-0"

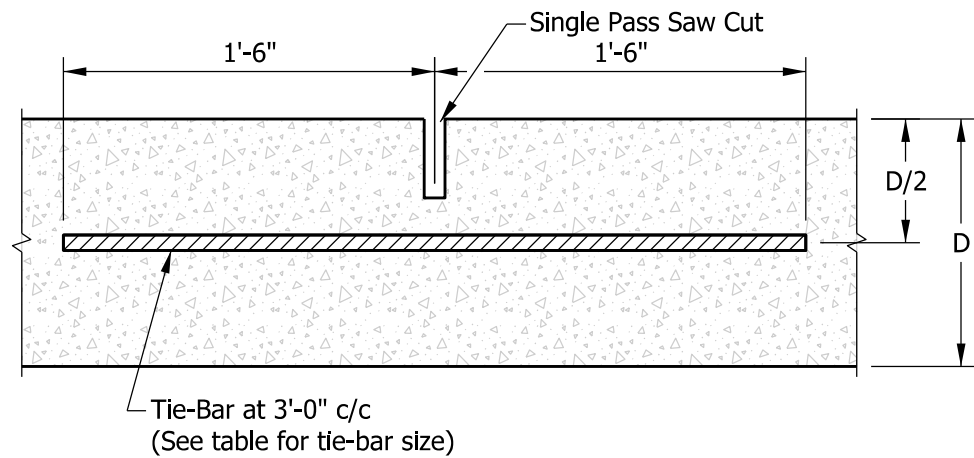
INDIANA DEPARTMENT OF TRANSPORTATION

TRANSVERSE CONSTRUCTION JOINT DETAILS

SEPTEMBER 2020

STANDARD DRAWING NO. E 503-CCPJ-04

	<p style="text-align: right;"><i>Elizabeth W. Phillips</i> 03/10/20 DESIGN STANDARDS ENGINEER DATE</p> <p style="text-align: right;"><i>[Signature]</i> 05/08/20 CHIEF ENGINEER DATE</p>
--	--

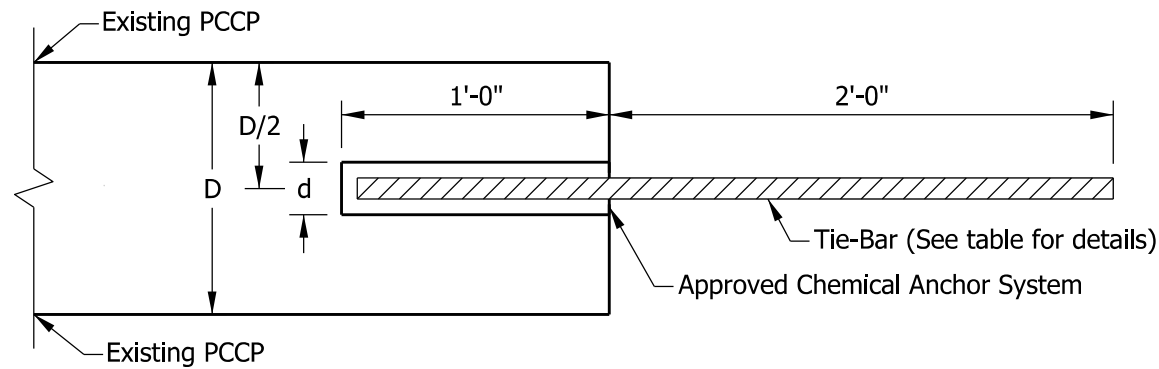


TIE-BAR SIZES FOR LONGITUDINAL JOINT	
Pavement Thickness, D	Tie-Bar Size
Less than or equal to 9"	#5
Greater than 9"	#6

NOTE:

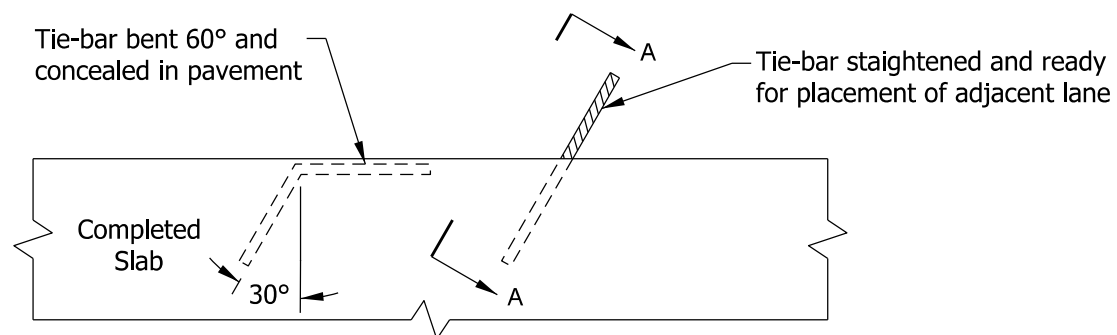
1. Diameter of drilled hole (d) shall be in accordance with the chemical anchor system manufacturer's instructions.
2. For retrofitted tie-bar skew and tilt tolerances see 503-CCPJ-04.

LONGITUDINAL JOINT TRANSVERSE SECTION THROUGH PCCP

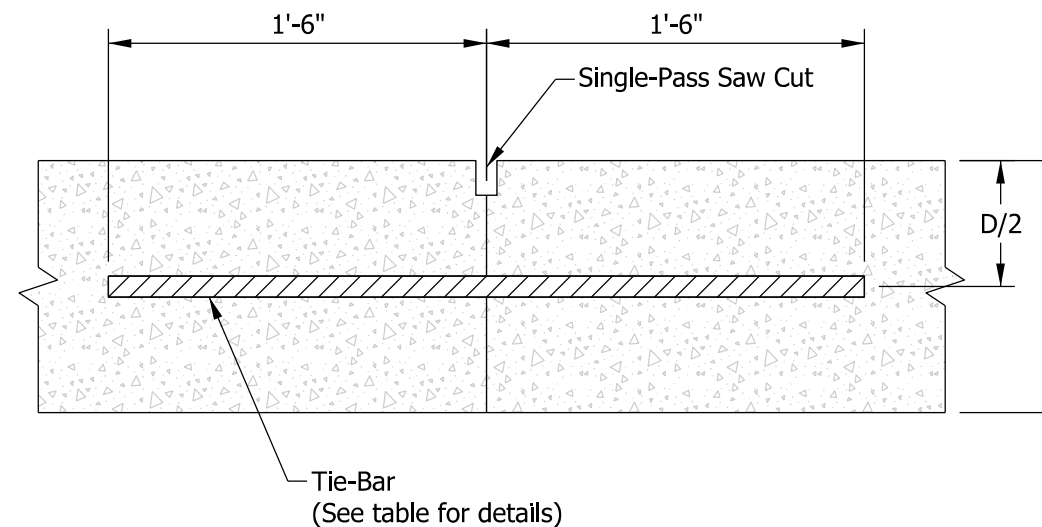


TIE-BAR SIZES FOR LONGITUDINAL CONSTRUCTION JOINTS		
Pavement Thickness, D	Tie-Bar Size	Spacing
Less than 9"	#5	3'-0" c/c
9" through 12"	#6	3'-0" c/c
Greater than 12"	#6 or #7	2'-0" c/c 3'-0" c/c

LONGITUDINAL CONSTRUCTION JOINT TRANSVERSE SECTION THROUGH PCCP (RETROFITTED TIE-BARS)



LONGITUDINAL CONSTRUCTION JOINT PLAN VIEW (BENT TIE-BAR PLACED IN PLASTIC CONCRETE)



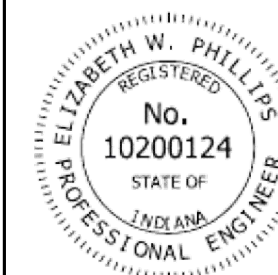
SECTION A-A

INDIANA DEPARTMENT OF TRANSPORTATION

LONGITUDINAL JOINT DETAILS

SEPTEMBER 2020

STANDARD DRAWING NO. E 503-CCPJ-05



Elizabeth W. Phillips 03/10/20
DESIGN STANDARDS ENGINEER DATE

[Signature] 05/08/20
CHIEF ENGINEER DATE